



Shin

---



לִסְ



נִי



מְחֵה



ךָה

70

בְּעִים

7

בַּע

Shoes shall sound soft

---

On the floor

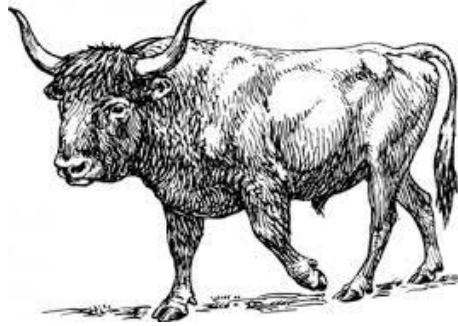
---

In the loft

---

By the door.

---



שׁוֹר

Homework:

Repetition is very important. Get a notebook, and each day of the week, take a few minutes and think of your own examples for each of these Shin sounds. They can be at the beginning of the word, the middle, or even the end.